

# Plans d'évacuation tsunami

## Projet EXPLOIT

« *EXPLOitation et Transfert vers les collectivités des Antilles françaises d'une méthode de planification des évacuations en cas d'alerte tsunami* »

Projet co-financé par la Fondation de France et piloté par l'UMR GREED (Université Paul-Valéry Montpellier 3 & IRD)

### Commune de Grand-Bourg



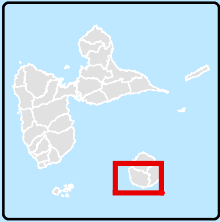
*Edition février 2018*

Université Paul-Valéry Montpellier III  
UMR GRED – Site Saint-Charles 2  
Route de Mende  
34 199 Montpellier cedex 5

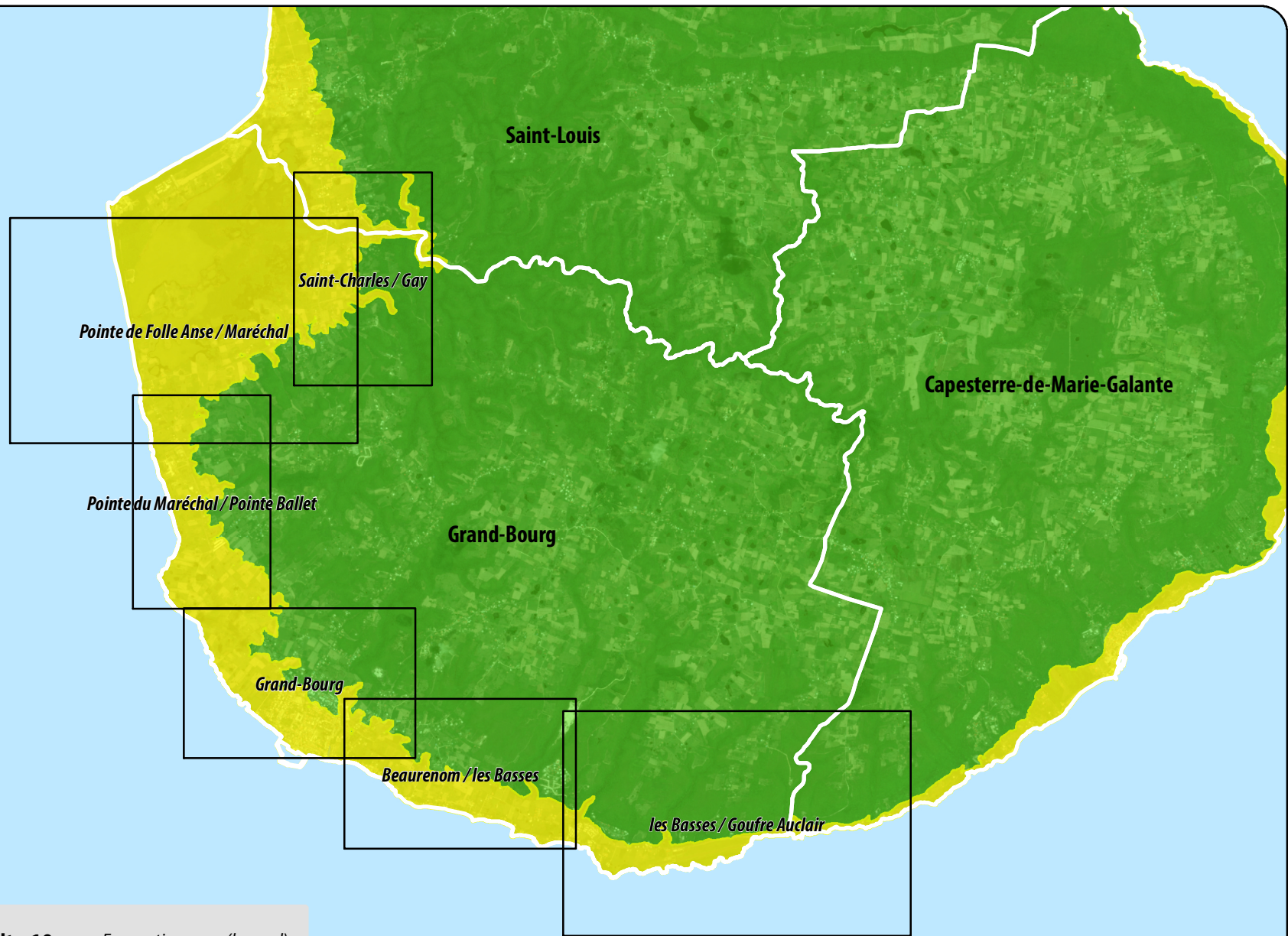
*Site internet du projet*




*<https://exploit.univ-montp3.fr/>*

Frédéric Léone - [frederic.leone@univ-montp3.fr](mailto:frederic.leone@univ-montp3.fr)  
Matthieu Péroche - [mathieu.peroche@univ-montp3.fr](mailto:mathieu.peroche@univ-montp3.fr)

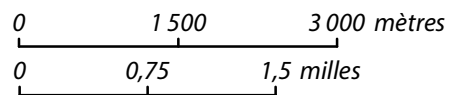


© GRED - 2017



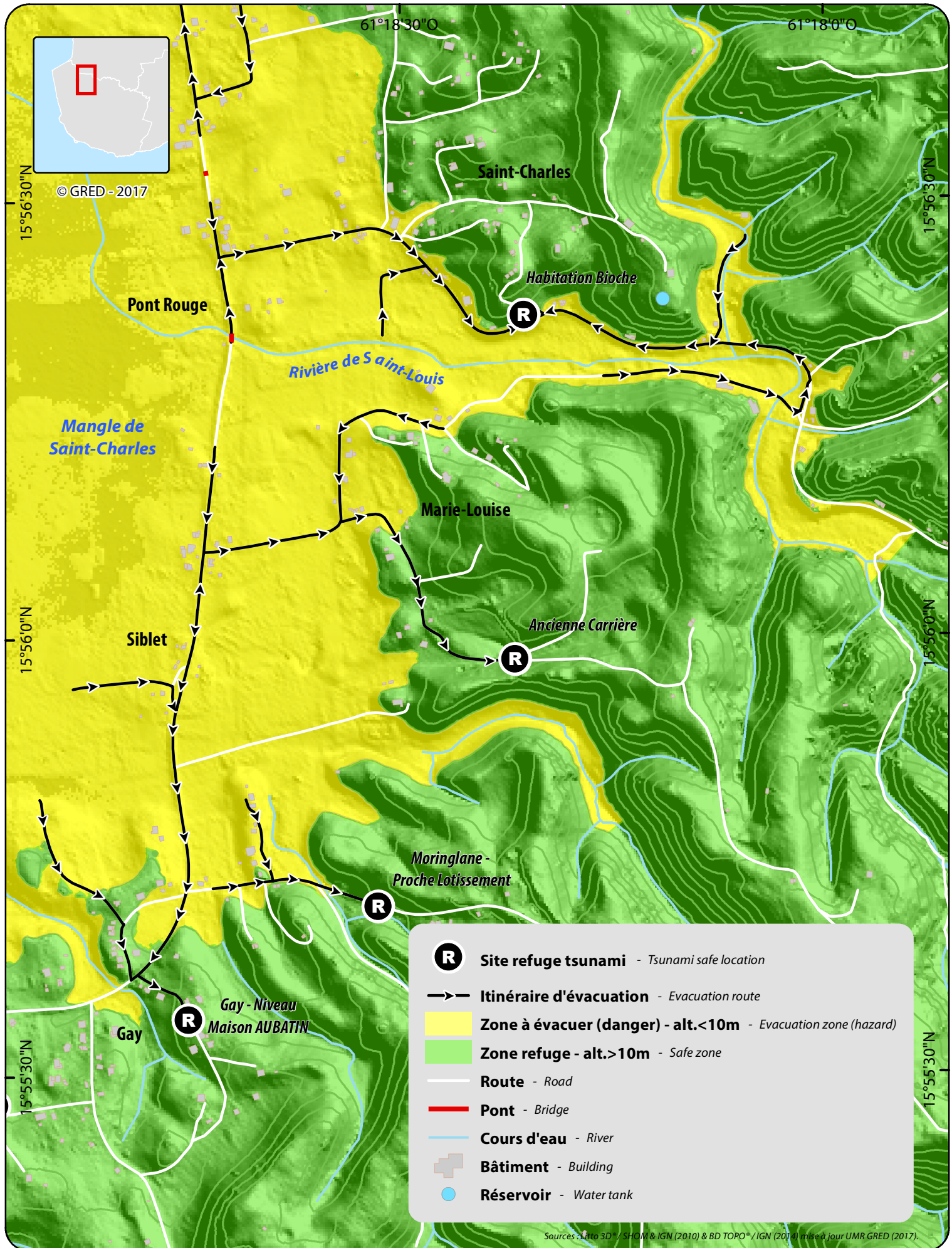
-  **Zone à évacuer (danger) - alt.<10m** - Evacuation zone (hazard)
-  **Zone refuge - alt.>10m** - Safe zone
-  **Limite communale** - Municipal boundary

Sources : Litto 3D® / SHOM & IGN (2010) ; BD ORTHO® / IGN (2015) & BD TOPO® / IGN (2014) mise à jour UMR GRED (2017).



**INDEX DES PLANS D'EVACUATION TSUNAMI**  
**TSUNAMI EVACUATION PLAN INDEX**  
**Commune de Grand-Bourg**



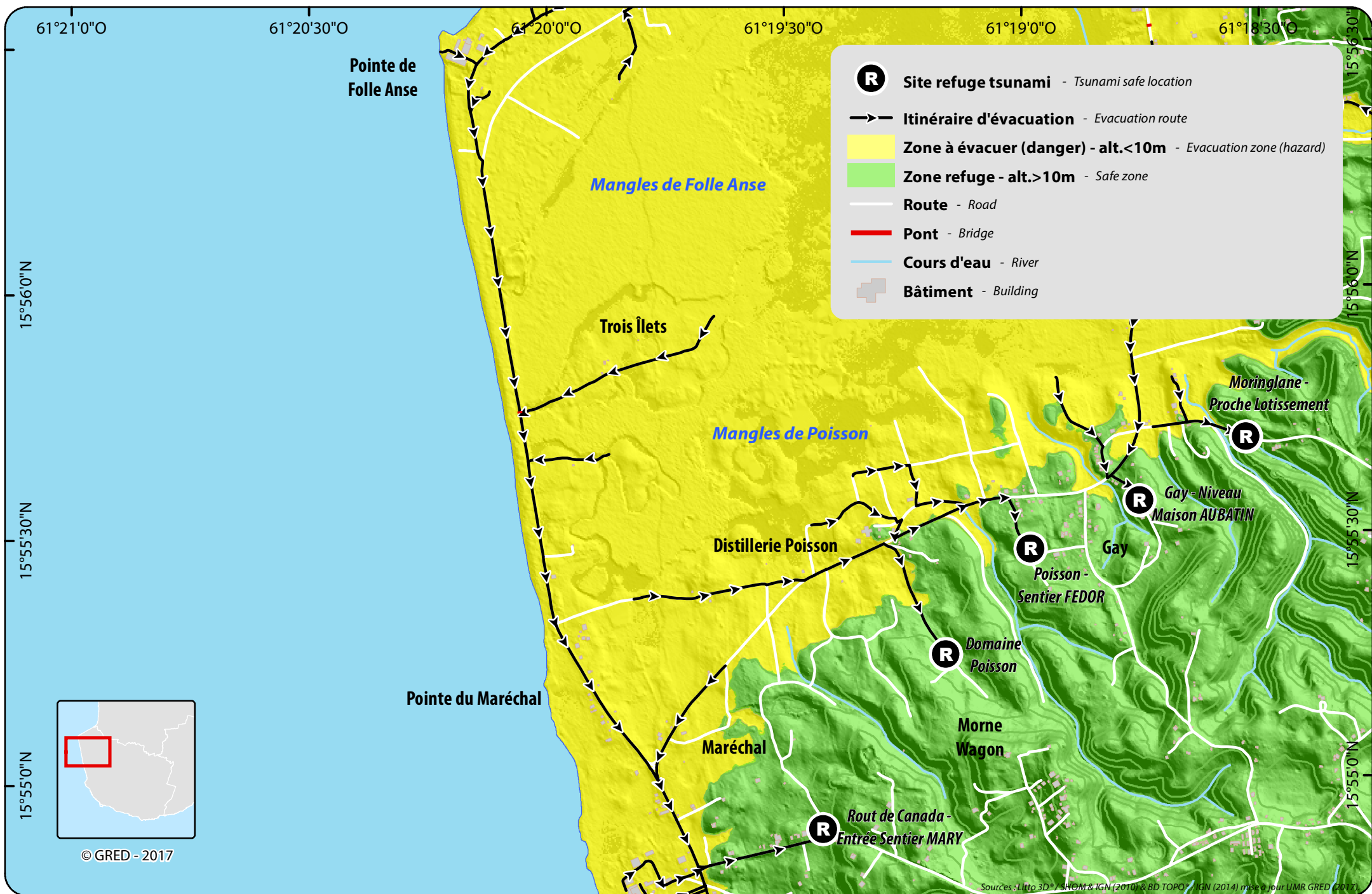


0 125 250 mètres  
0 0,1 0,2 milles

**PLAN D'EVACUATION TSUNAMI**  
TSUNAMI EVACUATION PLAN  
Saint-Charles / Gay

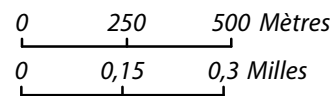


Gouvernance, Risque, Environnement, Développement



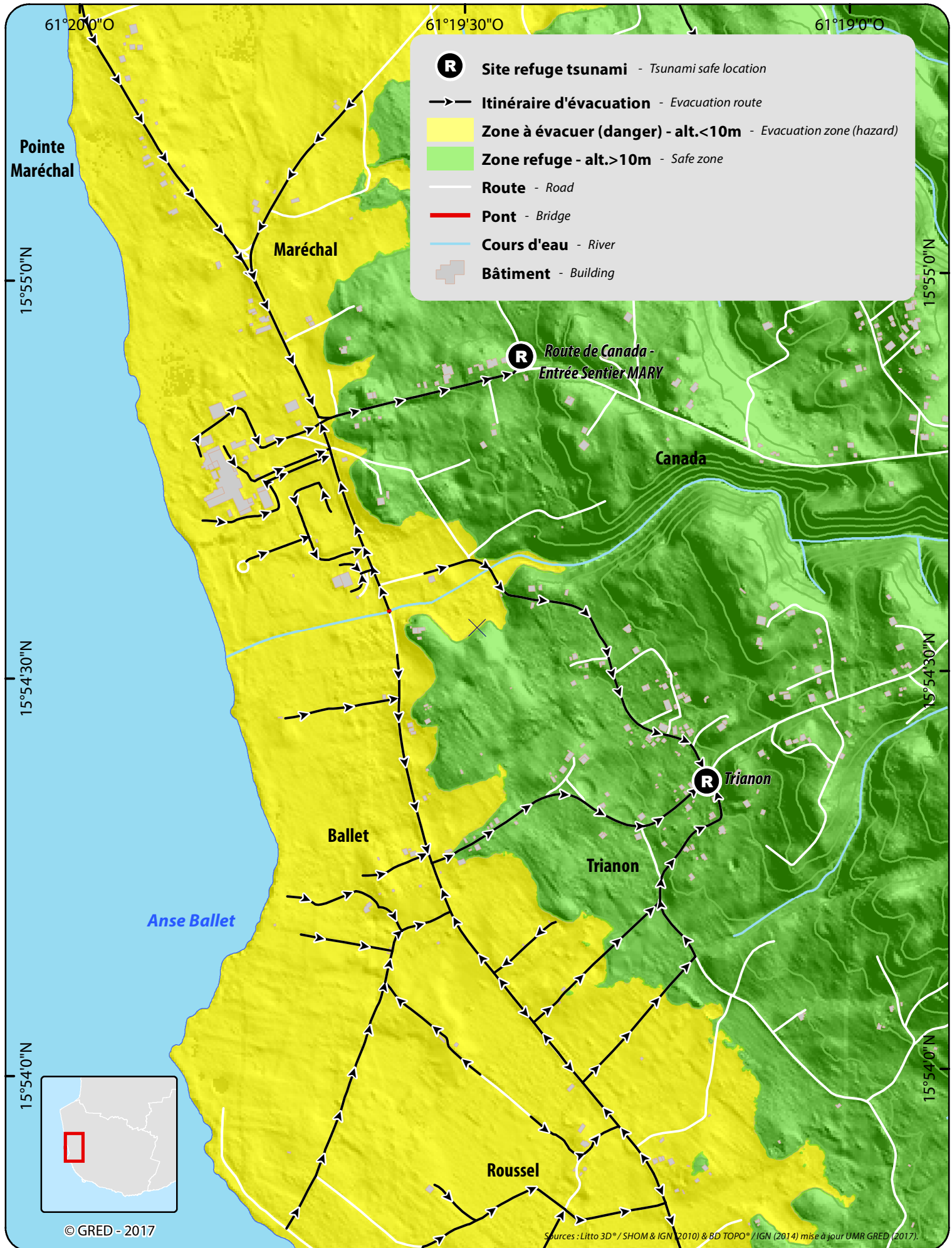
© GRED - 2017

Sources : Lito 3D / SHOM & IGN (2010) & BD TOPO / IGN (2014) mise à jour UMR GRED (2017)



**PLAN D'EVACUATION TSUNAMI**  
**TSUNAMI EVACUATION PLAN**  
**Pointe de Folle Anse / Maréchal**





© GRED - 2017

Sources : Litto 3D<sup>®</sup> / SHOM & IGN (2010) & BD TOPO<sup>®</sup> / IGN (2014) mise à jour UMR GRED (2017).

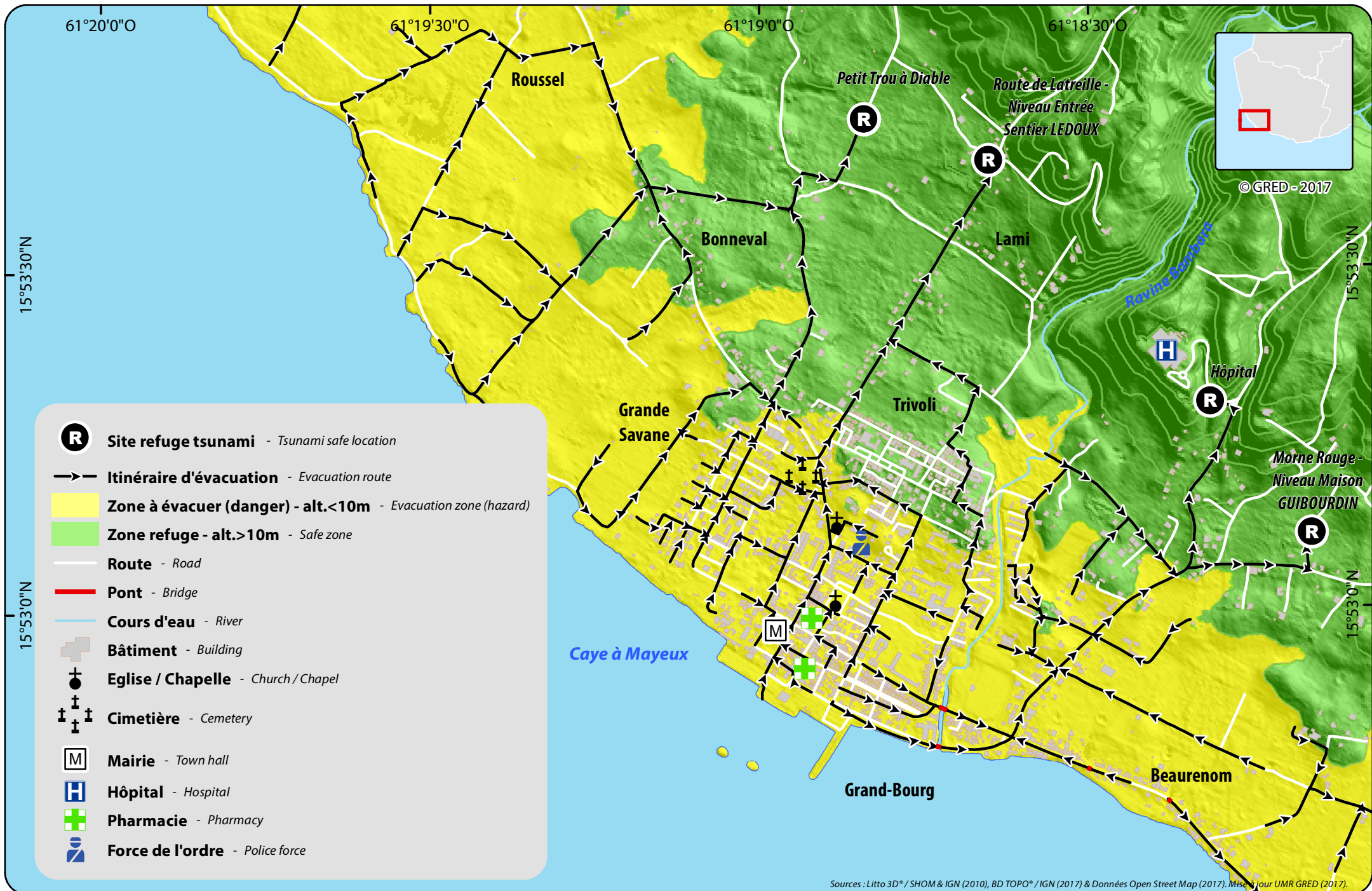


0 150 300 mètres  
0 0,1 0,2 milles

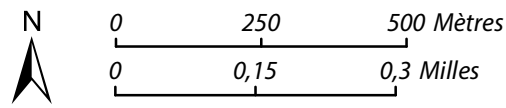
**PLAN D'EVACUATION TSUNAMI**  
**TSUNAMI EVACUATION PLAN**  
**Pointe du Maréchal / Pointe Ballet**



Gouvernance, Risque, Environnement, Développement



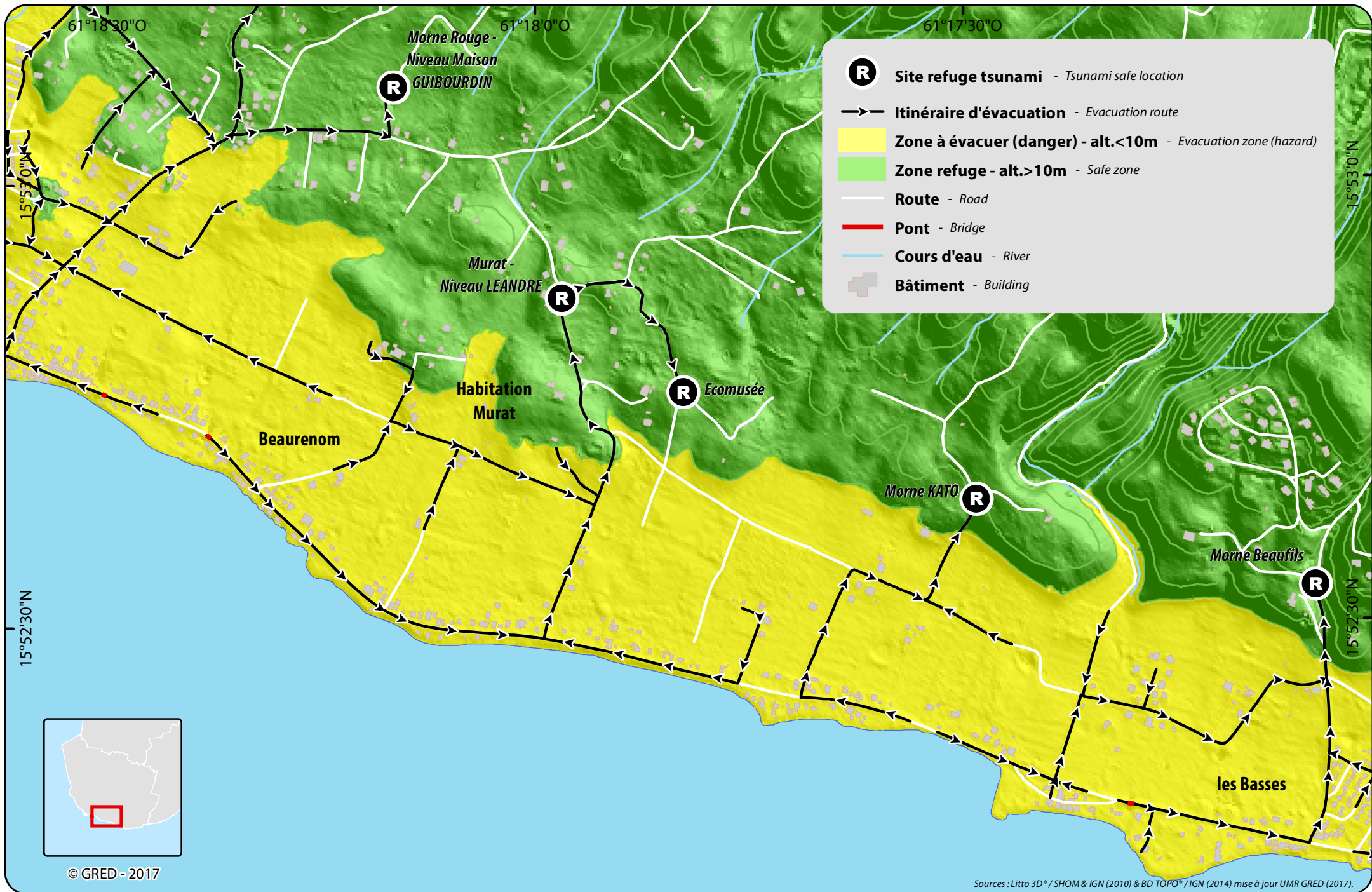
- R** Site refuge tsunami - Tsunami safe location
- Itinéraire d'évacuation - Evacuation route
- Yellow** Zone à évacuer (danger) - alt. <10m - Evacuation zone (hazard)
- Green** Zone refuge - alt. >10m - Safe zone
- White line** Route - Road
- Red line** Pont - Bridge
- Blue line** Cours d'eau - River
- Grey square** Bâtiment - Building
- Black cross** Eglise / Chapelle - Church / Chapel
- Black cross with dots** Cimetière - Cemetery
- M in square** Mairie - Town hall
- H in square** Hôpital - Hospital
- Green cross** Pharmacie - Pharmacy
- Blue figure** Force de l'ordre - Police force



**PLAN D'EVACUATION TSUNAMI**  
**TSUNAMI EVACUATION PLAN**  
**Grand-Bourg**

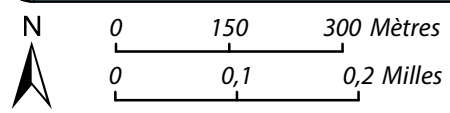
Sources : Litto 3D® / SHOM & IGN (2010), BD TOPO® / IGN (2017) & Données Open Street Map (2017). Mise à jour UMR GRED (2017).





© GRED - 2017

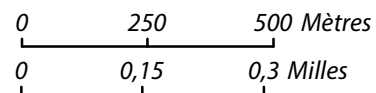
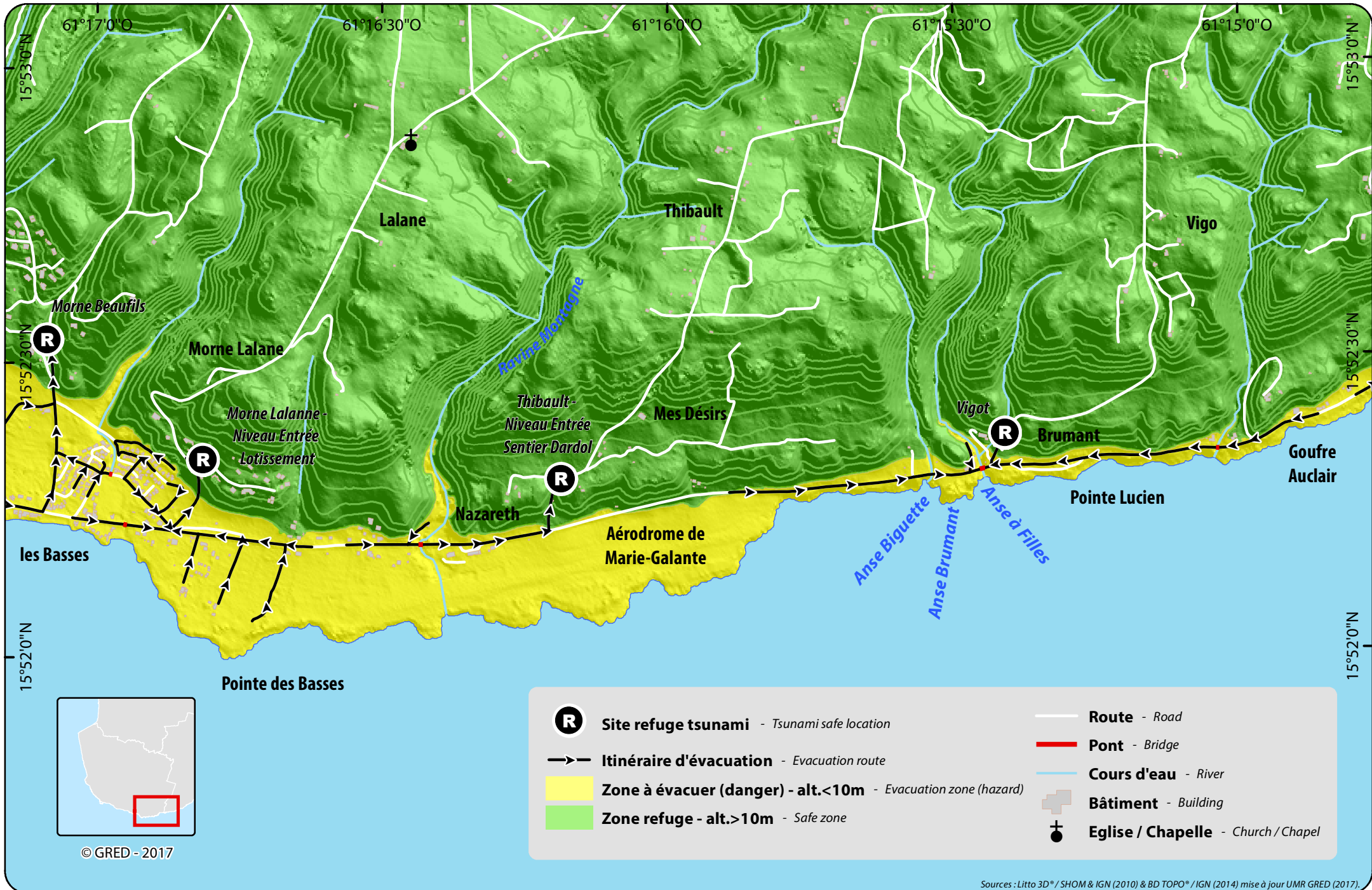
Sources : Litto 3D® / SHOM & IGN (2010) & BD TOPO® / IGN (2014) mise à jour UMR GRED (2017).



**PLAN D'EVACUATION TSUNAMI**  
**TSUNAMI EVACUATION PLAN**  
**Bearenom / les Basses**







**PLAN D'EVACUATION TSUNAMI**  
**TSUNAMI EVACUATION PLAN**  
**les Basses / Goufre Auclair**

